

Neon Strip

LED Segment Display

Mini LED Display

Maximum strip length upto **50M** for **easy installation** both **outdoor** or **indoor**.

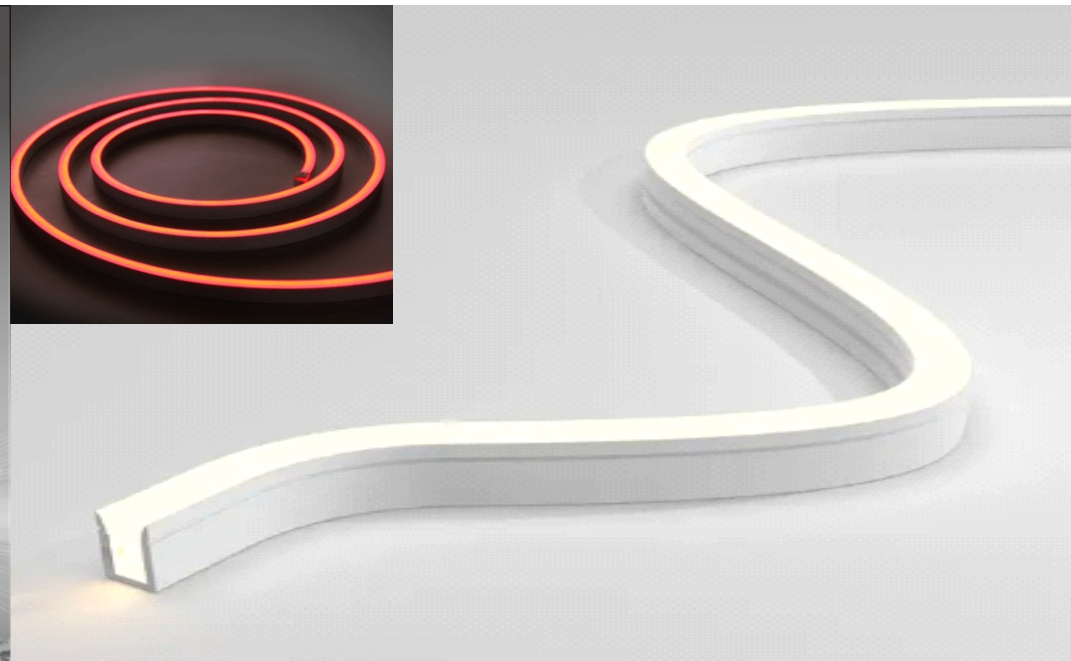
Overcome the quality issues of existing designs in markets which **flexible PCB's** fragility crashes with **hard silicone** bodies.

Cut at each **single LED** section to solve the onsite installation issues.

Patent No. HK1259954

Silicone sealed tube for **outdoor IP67** application.

Revolutional design to combine the structure of module and **elastic tube** for the best **reliability**.



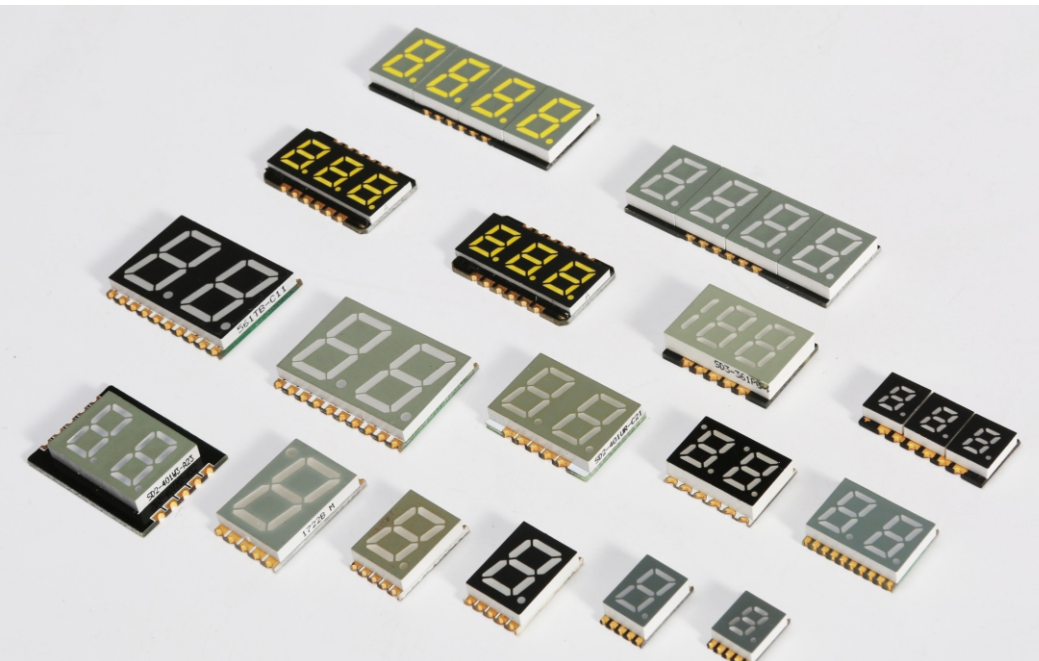
Our Neon LED Strips can be used to create smooth shadow and glare free colored lighting on walls and curved surfaces. You won't need a plastic cover or diffuser when you use these strips because they are encased in a special milky silicone molding. This product is ideal for architectural accents, signs, displays, night clubs, storefronts, interior designs, or any application where a dot free color changing light is desired.

LD-F128-02835-XX-24V-L1-S1508

Color: White(CCT 2700K-6500K), CRI \geq 90, dimmable
 Length: 5 meters(16ft)/reel.
 Input Voltage: 24V DC
 Lumens: 800lm/m
 Watts: 15W/m
 Certification: UL, IK10, RoHS compliance

LD-F140-02835-XX-24V-L1-T1515

Color: White(CCT 2700K-6500K), CRI \geq 90, dimmable
 Length: 5 meters(16ft)/reel.
 Input Voltage: 24V DC
 Lumens: 1100lm/m
 Watts: 15W/m
 Certification: UL, IK10, RoHS compliance



We offers a full range of through-hole technology (THT) & surface mount 7-segment displays(SMD) ranging from standard brightness displays to ultra bright displays. Single Digit, Dual Digit, Three Digit and Four displays are available in assorted character heights and colors. Compared with THT 7-segment displays, the SMD 7-segment displays feature lower power requirements, high light output, less space and more design flexibility.

We also provide customized products, such as alphanumeric display, graphic display etc., whose highly integrated customization capability enables the display products to fit well to customer specific design needs, making the products unique to the customers' applications.

Seven-Segment Display				
Category	THT	SMD	Digit Size	Emitting Color
Single Digit			0.2"-5.0"	white red
Dual digits			0.2"-0.8"	yellow blue
Triple digits			0.2"-0.8"	green yellow green
Four digits			0.2"-0.8"	pure green orange

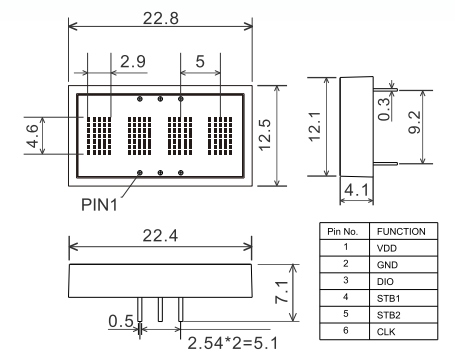
Customized Display

As the name suggests, mini LEDs are a lot smaller than regular LEDs—Mini LEDs are about half the size of a typical LED. That lets companies fit more LEDs into their displays. With more LEDs, it's easier to create a greater number of local dimming zones for greater contrast. Usually, Mini LED are used for TVs, monitors, laptops etc. Why we introduced this technology to numeral display industry? for It will bring higher brightness, more intelligent function and more attractive appearance.

Smart LED Display

Features:

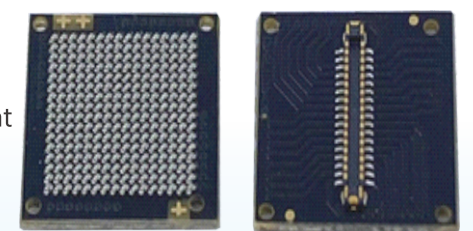
1. Mini LED technology
2. Driven by on-board CMOS Ics
3. Each display can be directly interfaced with a microprocessor.
4. Variety choices of colors, font heights, and characters.
5. RGB available



Character LED Display

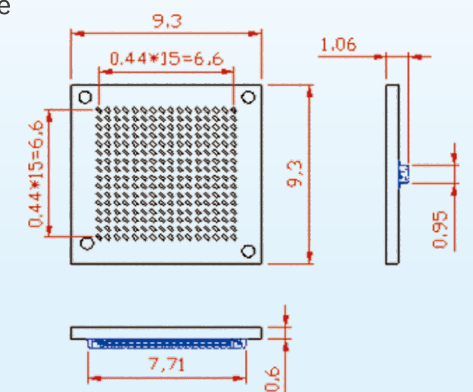
Features:

- Mini LED technology
- 16x16 Dot matrix displays
- Max 6.6mm (0.26") character height
- 0.5mm dot and pitch 0.44mm



Packages:

- Rugged X- and Y-stackable package
- Connector assembly
- RGB available



MoFX-Transparent

MF100R80-36V-CCT-C

Certification: RoHS, IP67
 Size: 17x10mm
 Input Voltage: 36V, 14W/m
 CCT: 2700-6500K
 Lumen output: 1720 lm/m

MoFX-Side View

MF100R80-36V-CCT-S

Certification: RoHS, IP67
 Size: 16x20mm
 Input Voltage: 36V, 14W/m
 CCT: 2700-6500K
 Lumen output: 650 lm/m

MoFX-Top View

MF100R80-36V-CCT-T

Certification: RoHS, IP67
 Size: 20x20mm
 Input Voltage: 36V, 14W/m
 CCT: 2700-6500K
 Lumen output: 975 lm/m



INTERLED Factory Profile



Interled Optoelectronics Technology Ltd.

Established in 2002, with **over 20 years** of experience in the LED industry, our core team possesses extensive expertise in LED encapsulation and application, enabling us to create LED lighting products with cutting-edge technologies. Guided by a professional spirit, precise positioning, and a commitment to delivering high-standard products, we strive to promote the sustainable development of our company. Our factory is located in Dongguan, China, and spans a 4,000-square-meter workshop equipped with state-of-the-art machinery from renowned brands. This allows us to ensure the seamless production of COB, SMT, assembly, over-molding, burn-in tests, and other processes. Additionally, we have a wide range of optoelectronic performance and reliability testing equipment that provides robust data support, ensuring the utmost quality and reliability of our products.

We always pay close attention to industry development and actively embrace the global market. Guided by our focus on technology research and development, we have obtained numerous product patents. We place great importance on building and continuously improving our production processes, as evidenced by our successful **ISO9001 and ISO14001** certifications. Our commitment to environmental protection is reflected in our products' compliance with RoHS standards. We prioritize product safety and have obtained **CCC, CE, and UL** certifications for many of our product lines. Furthermore, through positive interactions with local governments, we have been honored with certifications as a 'Private Technology Enterprise' and a 'High-tech Enterprise.' After more than 20 years of dedicated efforts, our factory has gained recognition from discerning customers, including high-caliber LED lighting designers, distributors, retailers, and manufacturers worldwide.

In addition to our own brands, we also collaborate with international renowned brands through **OEM and ODM** partnerships.

Interled Optoelectronics Technology Ltd.
No.5, First Road, Sanjiang Industrial Zone, Hengli Town, Dongguan City, Guangdong, 523462, China.
Web.: www.interled.com.cn
Email: sales@interled.com.cn
Tel.: +86-769-8118 0883



Led Modules

Features

- 160° lens Series offers a wide range of solutions to meet your channel letter illumination needs.
- High luminous efficiency, up to 120-130lm/W; CRI ≥ 90.
- Biodegradable material, low harmful impact on the environment.
- Completed products range, from narrow to wide, from shallow to deep. OEM or ODM available.
- UL, CE, RoHS approved
- Lifespan: 50000H, 5 years warranty



160° Lens Series LED Modules

Category	Pictures	Light intensity	Size(mm)	Other Data
Single dot		120lm/w	φ9.4x14.8	12V/24V, 0.5W
Dual dot		120lm/w	43x16x9.8	12V/24V, 0.72W
Three dot		120lm/w	66x16x10.4	12V/24V, 1.2W
Four dot		120lm/w	35x35x10.5	12V/24V, 1.5W
Seven dot		120lm/w	60x55x11.4	24V, 2.5W

Tags: 160° beam angle, IP67, CRI 90 White color. UL, CE, RoHS approved

RGB LED Modules

Category	Pictures	Lumen	Size(mm)	Other Data
M1-J1B-F1-L1-5V		R: 3.3lm G: 5.6lm B: 1.7lm	Ø9.4x25.3	5V DC, 0.3W 120° beam angle"
MD6-J2A-F1-L1-24V		R: 14.2lm G: 2.4lm B: 7.2lm	40X33.8X12.4	24V DC, 1.5W 120° beam angle"
MP6-J2A-F1-L1-24V		R: 14.2lm G: 2.4lm B: 7.2lm	73x28x11.3	24V DC, 1.5W 120° beam angle"
M3W-J1B-FU-L1-12V		R: 15lm G: 7.5lm B: 4.5lm	66x16x10.4	12V DC, 0.72W 140° beam angle"

Tags: Individual addressable RGB color. IP67, NO UV or IR radiation/UL, CE, RoHS approved

LED Flexible Strips

Features

- High brightness and uniform illumination
- for SMD series, All brands LEDs are optional, such as Nichia, Cree, Samsung etc.
- the COB series have impressive uniform with Standard Deviation Colour Matching <3
- the COB series have no perceptible dots allowing premium decoration designs.
- Lifespan: 35000H, 3 years warranty

SMD Series



F80-I3030-24V-CCT-SUN

Color: White(CCT 2700K-6500K)
CRI ≥ 95, dimmable

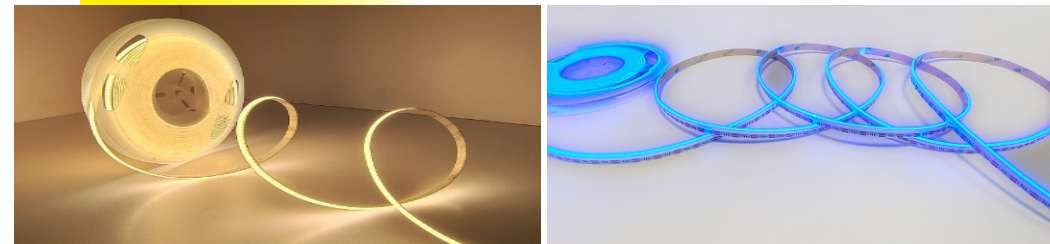
Length: 5 meters(16ft)/reel.
Input Voltage: 24V DC
Lumens: 2400lm/m
Watts: 18W/m
Certification: CE, RoHS compliance

F128R90-I2835-24V-CCT

Color: White (CCT:2700K-6500K) CRI:90

Length: 5 meters(16ft)/reel.
Input Voltage: 24V DC
Lumens: 2730lm/m
Watts: 23W/m
Certification: CE, RoHS compliance

COB Series



CF-I0810-480-XXR90-24V-L1

Color: White(CCT 2700K-6500K),
CRI ≥ 90, dimmable

Length: 5 meters(16ft)/reel.
Input Voltage: 24V DC
Lumens: 1200lm/m
Watts: 10W/m
Certification: CE, RoHS compliance

CF-I0810-RGB-12V-L1-S

Color: RGB

Length: 5 meters(16ft)/reel.
Input Voltage: 12V DC
Lumens: R:40lm/m, G:100lm/m, B:16lm/m
Watts: 9.6W/m
Certification: CE, RoHS compliance

OEM/ODM Services

With an experienced R&D team and advanced production equipment, our company provides OEM and ODM services to meet the personalized needs of customers domestically and overseas. We have successfully developed and produced plant grow lamps, disinfection lighting, soft-film ceiling lighting and other customized products, consistently receiving high praise from customers.

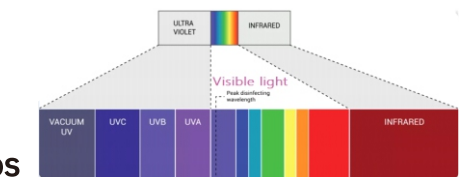
Grow Lighting

LED lights are set to transform the horticulture industry by optimizing crop yields and costs in vertical farms. Interled's LED horticultural lighting offers the opportunity to precisely control spectral composition with low heat emission and effective lighting output for years, without the need for frequent replacements.



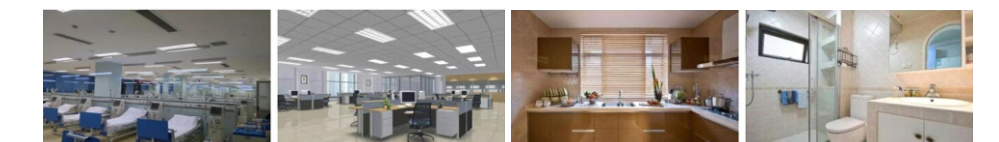
Disinfection Lighting:

visible light pure protection lamps



Our visible- light pure protection lamps have the power to inactivate the DNA and RNA of micro-organisms, rendering them harmless but no damage or severe injuries to the human eyes and skin.

Our visible- light pure protection technology is different from the well-known UV-C ultraviolet sterilization function. During use, it avoids the harm of UVC to human eyes and skin and the rapid aging of the surface of organic objects. At the same time, it retains the sterilization and virus inactivation capabilities of ultraviolet rays. Its greatest feature is that it truly realizes the safe coexistence but not degrade organic materials, and continuously sterilizes the air and surfaces.



Soft-film Ceiling Lighting

the Ceiling Is the Lamp, the Lamp Is the Ceiling Application:

Car showrooms, digital stores, clothing stores, company showrooms, aisles, conference rooms, hospitals, banks, etc.

Features:

The size and shape can be customized according to the site, and special-shaped structures can be made. Embedded installation can be perfectly combined with the ceiling. It can meet the lighting requirements of high brightness and large spaces. The illumination is uniform and glare-free. The modular design of the light-emitting module is easy to install and has ideal dust-proof effect.

