

# Elite Pass

## Robust Facial Recognition Terminal with Ultra-large Capacity



**Elite Pass** is a Ultra-large capacity facial recognition terminal that can be used in strong Sunlight and faint light environments. It's powered by the latest ZKTeco-customized CPU, which is delegated for running the deep learning facial recognition algorithm to boost up the performance in all aspects.

With its powerful core and the latest deep learning facial recognition algorithm, the Elite Pass facial recognition capability has been reached to the new height of the biometrics industry, supporting a maximum of 50,000 facial templates, facial recognition speed less than 0.3sec per face, ultimate anti-spoof ability against almost all types of fake photos and videos attack.

Other than the powerful core, Elite Pass is also equipped with the latest faces capture system, which enables the terminal to recognize faces under extreme strong light conditions (0.5 lux–50,000 lux). Meanwhile, Elite Pass supports microwave detection that can precisely evaluate the distance between the user and the device for waking up the recognition terminal.

## Features

- Quick facial recognition in 0.3 second
- Anti-spoofing algorithm against print attack, videos attack, and 3D mask attack
- IP68 dust and waterproof standard and IK04 impact protection standard
- Wide range of working temperature -30°C~60°C (-22°F~140°F)
- Ultra-large capacity of facial templates; 1:N – 30,000 facial templates, optionally supports maximum 1:N – 50,000 facial templates
- Support Microwave detector, Outdoor facial recognition works at a distance of 3m
- 2MP WDR Low Light Camera, facial recognition under extreme lighting conditions (0.5 lux – 50,000 lux)
- The terminal support several communication modes, TCP/IP, Wi-Fi(Optional), RS485, RS232
- Support ±8kV Contact discharge, ±15kV Air discharge

## Specifications

### Capacity

faces: 30,000(1:N)  
50,000(Optional)  
Users: 50,000  
Transactions: 1,000,000  
User Photos: 20,000  
Event Photos: 10,000

### Compatibility

Security Relay Box  
Wiegand / RS485 / RS232 Slave Reader  
With FP / RFID / Barcode(Optional)  
ZKBioSecurity Software

### Hardware

900MHz Dual Core Customized AI CPU  
512MB RAM / 8G Flash  
125KHz EM Reader / 13.56MHZ MF(Optional)  
2MP WDR Low Light Camera  
Hi-Fi Voice  
Microwave Distance Detection Sensor  
8" High Light IPS Touch LCD  
Reset Button & Tamper Switch

### Access Control interface

Lock Relay Output  
Alarm Output / Auxiliary Input  
Exit Button / Door Sensor

### Standard Function

Access Levels, Groups, Holidays, DST  
Duress Mode, Anti-Passback  
Record Query, Custom Wallpaper & Screen  
Saver, Tamper Switch Alarm

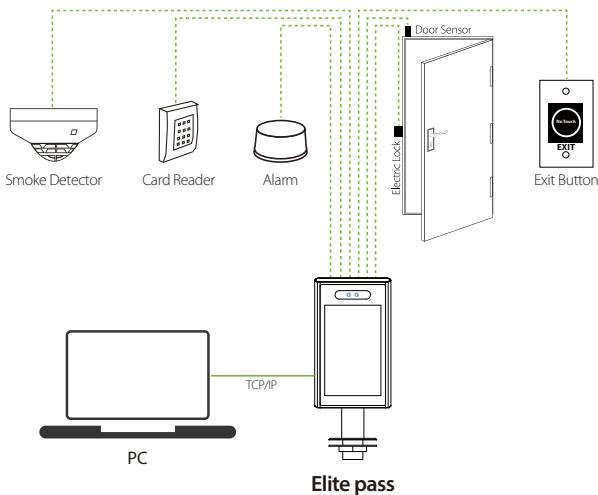
### Communication

TCP / IP, RS485 / RS232  
Wiegand Input / Output  
WIFI(Optional)

### Power

Operating Voltage 12V DC  
Current Draw < 2,000 mA

## Wiring Diagram



## Terminal Size Chart

